

SPECIFICATION FOR APPROVAL

CUSTOMER: _____

CUSTOMER P. N. : _____

PRODUCT MODEL: _____ EUC-200S315ST-0303 _____

PRODUCT NO. : _____

SAMPLE DATE: _____

CUSTOMER AUTHORIZED SIGNATURE		

Please return to us one copy of "SPECIFICATION FOR APPROVAL" with you approved signature.

ADD: Moso Technology Park, 6F, Sangtai Industrial Park, Guanwai Xiaobaimang
Songbai Road, Nanshan District, Shenzhen, Guangdong 518108, P. R. China

TEL: 0755-27657000 27657555 P. C. : 518108

FAX: 0755-27657908

E-mail: moso@mosopower.com

<http://www.mosopower.com>

Prepared By:	Checked by:	Approved by:

Table Of Content

1. Scope	4
2. Input Characteristics	4
2.1. Input Voltage & Frequency	4
2.2. Input AC Current	4
2.3. Inrush Current (cold start)	4
2.4. Power Factor	4
2.5. Efficiency	4
3. Output Characteristics	4
3.1. Static Output Characteristics <Vo & R&N> <3000mVp-p	4
3.2. Voltage/Current Curve	4
3.3. Turn - on Delay Time	5
3.4. Hold-up Time	5
3.5. Output voltage Overshoot	5
4. Protection Requirements	5
4.1.Short Circuit Protection	5
4.2.Over Voltage Protection	5
5. Environment Requirements	5
5.1. Operating Temperature and Relative Humidity	5
5.2. Storage Temperature and Relative Humidity	5
5.3. Vibration	5
5.4. Waterproof grade	5
6. Reliability Requirements	5
6.1. Burn-in	5
6.2. Life Time Qualification	5
7. Safety& EMC Standards	6
7.1. Safety category	6
7.2. EMS Standards	6
7.3. EMI Standards	6
8. Main Safety Test items	6
8.1. Dielectric Strength(Hi-pot)	6
8.2. Grounded Resistance	6
8.3. Leakage Current	6
8.4. Insulation Resistance	6
9. Derating Curve	7
10. Mach. Outline Drawing	8
11. I/O Marking Drawing	11

Remark:

Constant Current Output Characteristics	Minimum	Typical	Maximum
Output Current Range	2.99A	3.15A	3.31A
Output Voltage Range	43V	/	63V

3.3. Turn - on Delay Time

3.0S max. @ input 100-277Vac & Full load

3.4. Hold-up Time

8.5mS min. @ full load & 115Vac/60Hz input turn off at worst case

10mS min. @ full load & 230Vac/50Hz input turn off at worst case

3.5. Output voltage Overshoot

10% max. When the power on

4. Protection Requirements

4.1. Short Circuit Protection

The input power shall decrease when the output rail short, the power Supply shall no damage, and shall be self-recovery when the fault condition is Removed.

4.2. Over Voltage Protection

When the output voltage is over (1.2-1.4) V_{out} , the product will shutdown and enter protection status, the driver will re-start and work normally if the fault condition was eliminated.

5. Environment Requirements

5.1. Operating Temperature and Relative Humidity

-35°C to +60°C

10%RH to 100%RH

5.2. Storage Temperature and Relative Humidity

-40°C to +85°C

5% to 100%RH non-condensing @ Sea level shall be low 10,000 feet.

5.3. Vibration

10 to 300Hz sweep at a constant acceleration of 1.0G(Breadth: 3.5mm) for 1Hour for each of the perpendicular axes X, Y, Z.

5.4. Waterproof grade

IP67

6. Reliability Requirements

6.1. Burn-in

The power supply shall under go a minimum of 4 Hours burn-in test at $40^{\circ}\text{C} \pm 5^{\circ}\text{C}$ under full load condition

6.2. Life Time Qualification

The Life time shall be at least 50,000hours under T_{case} is 45°C , Full load and nominal input condition.

7. Safety& EMC Standards

7.1. Safety category

Safety Category	Country	Standard
CUL	USA & Canada	UL8750, UL935, UL1012, UL1310 Class 2, CSA-C22.2 No. 107.1, CSA C22.2 No. 223-M91 Class 2
CE	Europe	EN 61347-1, EN 61347-2-13

7.2. EMS Standards

EN 61000-3-2	Harmonic current emissions
EN 61000-3-3	Voltage fluctuations & flicker
EN 61000-4-2	Electrostatic Discharge(ESD): 8kV air discharge, 4kV contact discharge
EN 61000-4-3	Radio-Frequency Electromagnetic Field Susceptibility Test-RS
EN 61000-4-4	Electrical Fast Transient / Burst-EFT
EN 61000-4-5	Surge Immunity Test: AC Power Line: line to line 2 kV, line to earth 4 kV
EN 61000-4-6	Conducted Radio Frequency Disturbances Test-CS
EN 61000-4-8	Power Frequency Magnetic Field Test
EN 61000-4-11	Voltage Dips
EN 61547	Electromagnetic Immunity Requirements Applies To Lighting Equipment

7.3. EMI Standards

EMI Standards	Country	Notes
EN 55015	Europe	Conducted emission Test & Radiated emission Test with 6 dB margin
FCC	USA	FCC Part 15 class B, ANSI C63.4:2009

8. Main Safety Test items

8.1. Dielectric Strength(Hi-pot)

Primary to Secondary: 1875Vac 10mAMax / 60second(3second for production)

<Finished goods>

Primary to Earth: 1875Vac 10mAMax / 60second(3second for production)

Secondary to Earth: 1875Vac 10mAMax / 60second(3second for production)

8.2. Grounded Resistance

< 0.1Ω , 25A, 1Minute

8.3. Leakage Current

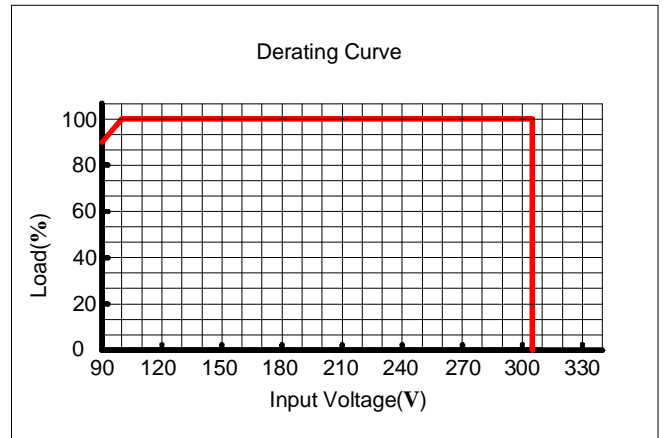
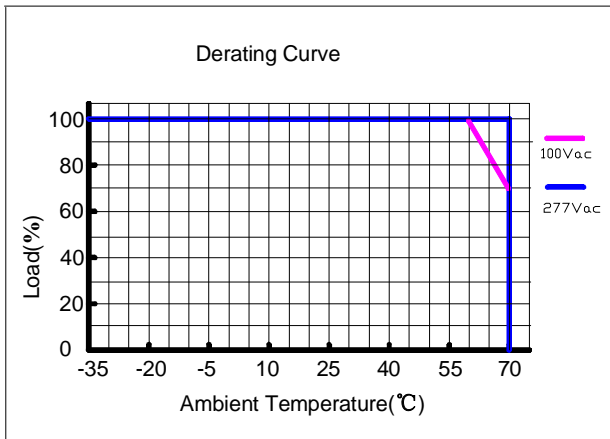
0.75mA max. at input 230Vac/50Hz.

8.4. Insulation Resistance

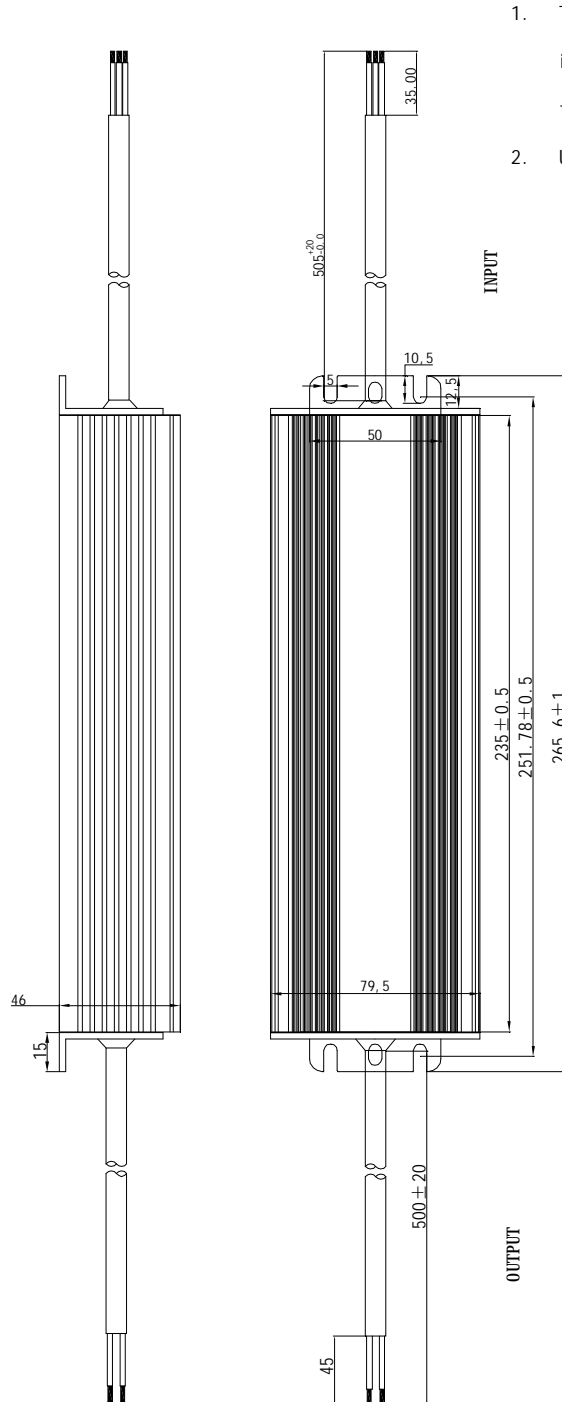
The IR shall be at least 50MΩ when apply 500Vdc between primary and secondary.

The IR shall be at least 50MΩ when apply 500Vdc between primary and Earth.

9. Derating Curve



10. Mach. Outline Drawing



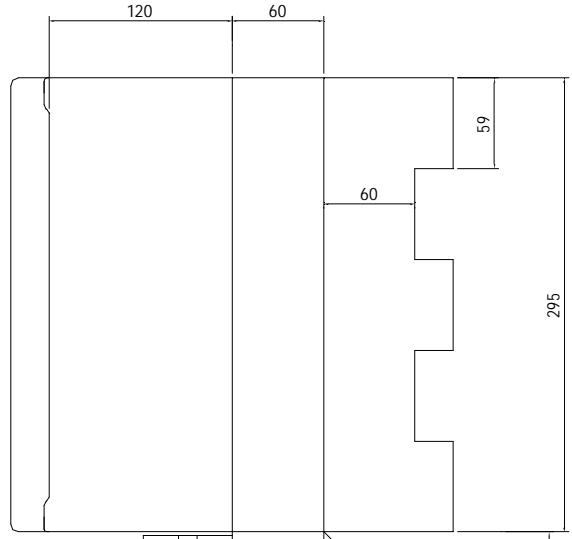
1. Tolerance: unmarked tolerance all is ± 0.5 , marked according to tolerance of it
2. Unit: mm

Dimensions	Millimeters(Inches)
Length	265.6(10.46)

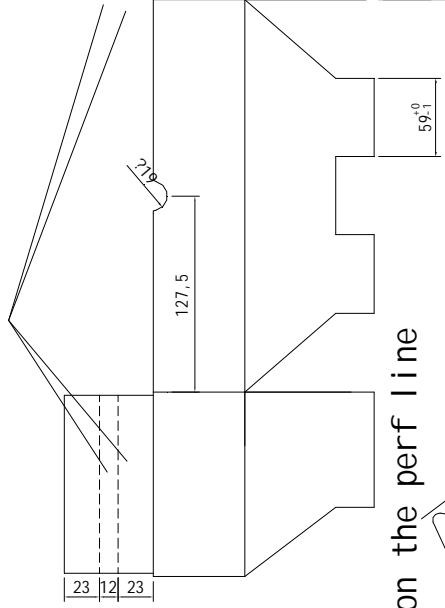
Wire	Specification
AC Input	3*1.0mm ² VDE+CCC

Width	79.5(3.13)	DC Output	2*1.0mm ² VDE+CCC
Height	46(1.8)	Dimming	/

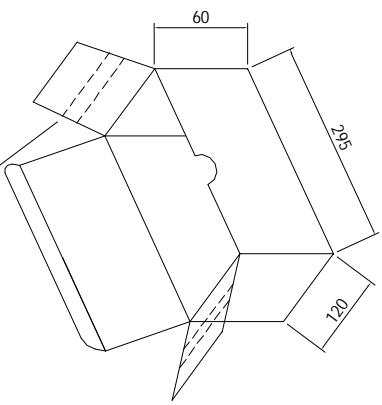
11. White box



Fold up inwards on the perf line



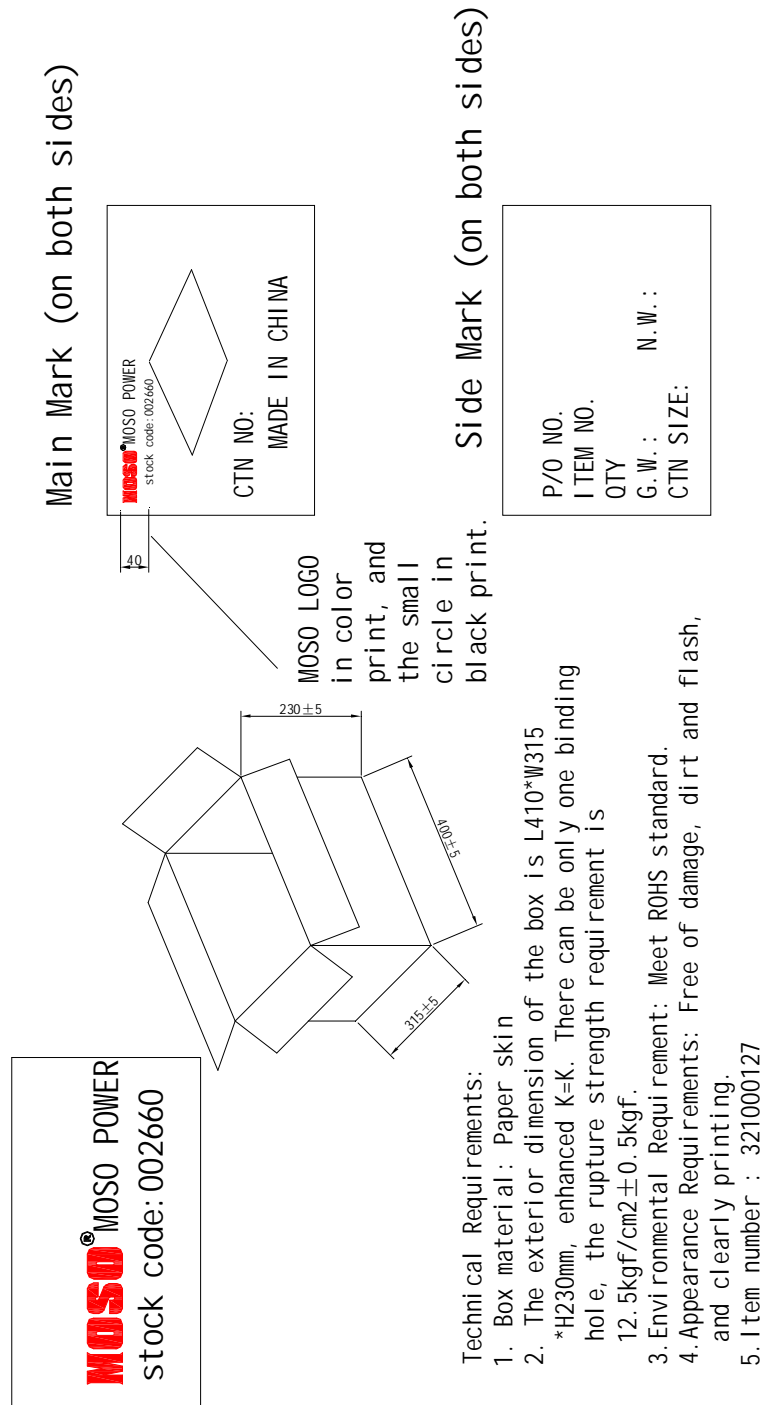
Fold up inwards on the perf line



Remark:

1. Material Requirement: E wave paper enhanced material .
2. No printed box in natural color.
3. The dimensions of the box are exterior dimensions.
4. Appearance Requirements: Free of flash, sink mark, black sport, dirt and damage.
5. Environmental Requirement: Meet ROHS standard.
6. Fix the lid on properly, it is not allowed to be opened mechanically.
7. Item number:321020094

12. Package Drawing



13. I/O Marking Drawing

30.00 mm

235.00 mm

L Brown
G Y/G
N Blue

MOSO[®] LED DRIVER (Constant Current Type) (±500V)
EUC-200S315ST-0303

Input Voltage	100-277V~	50-60Hz	Output Voltage	31-33V m
Input Current	2.4A		Output Current	3.15A

Patented Product
 Copy right reserved
 1301150303A0001

CE
 RoHS
 IP67
 5A: 400
 5A: 400

INPUT
 OUTPUT
Blue⁺

CAUTION:
 1. Do not put the product closely to
 flammable materials.
 2. Right installation to be used, heat conduction.

1301150303A0001

Remark: Above label is laser engraved

Bar code for 128 Formats
 Bits of resolution need to be enabled